



MANAGED SERVICES PROVIDER

MSP

A dedicated support team, based on-site or off, represents all aspects of your company's workforce strategies. Stakeholders and management gain visibility into supplier and labor performance with the data needed to reduce risk and drive cost savings.



Dedicated Support

On/Off-Site: Centralized program management is tailored to your unique needs with dedicated program teams located where it makes sense for your business

One Point-of-Contact: We serve as one point-of-contact for sourcing, procurement, HR, hiring managers, suppliers, finance and workers

VMS Management: We implement and manage all aspects of your automated processes, including assistance to end users



Process Improvement

Eliminate Administration: Remove the administrative burden related to requisitions, supplier management, training, invoicing and on/off boarding

Consistency: Uniform supplier contracts, consistent terms and conditions, communication templates and change management protocols

Supporting Your Goals: Acting as your consultative partner, we win scenarios that sustain your business strategies



Cost Savings

Analyze and Standardize: Our internal team of analysts establish fair market rates by job title and region, eliminating rate inflation to ensure the best possible price per hire

Competitive Rates: Maximize your labor budget with standardized rate cards based on your geography and job titles that encourage healthy competition by suppliers

Economy of Scale: Get better pricing by leveraging our spend in the marketplace

BENEFITS

Our corporate culture is customer-focused, consultative and entrepreneurial

- Direct & Indirect Cost Savings
- Supplier and Workforce Performance Metrics
- Access Best Talent
- Total Supplier Management
- Consolidating Invoicing
- End-to-End Process Improvement
- Improved Employment Compliance
- Enterprise-Wide Visibility
- Forward-Thinking Strategies

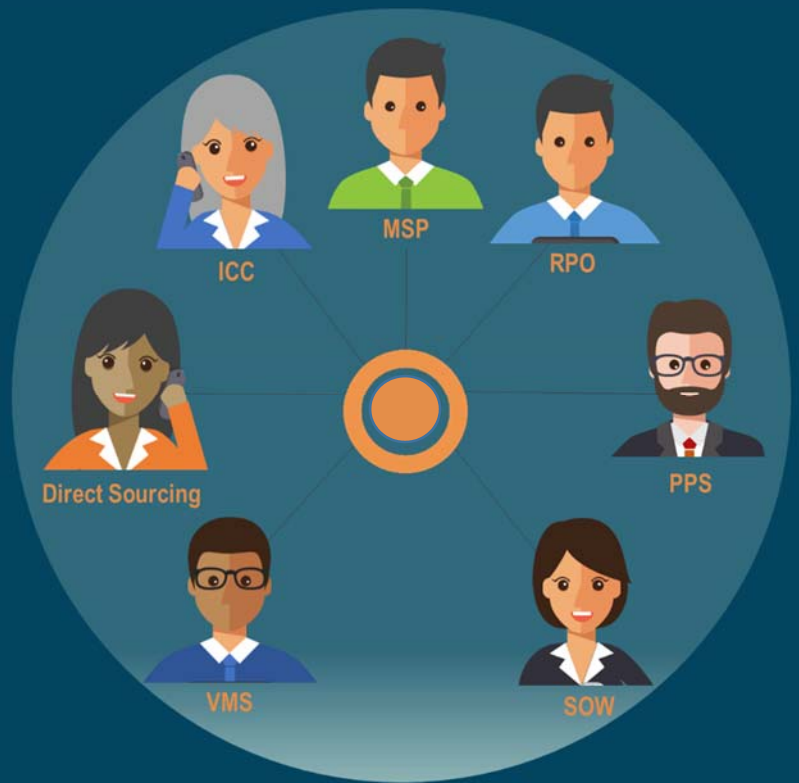


About Company A

Go beyond traditional workforce programs with a consultative partner able to manage your entire, end-to-end talent lifecycle. From cutting-edge technologies to award-winning services, Company A has the resources to provide true total talent management. Minority/ woman-owned, with operations in nearly 20 countries around the globe.

One World. One Workforce.

One provider: Company A.



Think Ahead

Eliminate Administration: Remove the administrative burden related to requisitions, supplier management, training, invoicing and on/off boarding

Consistency: Uniform supplier contracts, consistent terms and conditions, communication templates and change management protocols

Supporting Your Goals: Acting as your consultative partner, we win scenarios that sustain your business strategies



Supplier Management

Source & Select: Dedicated GSS team validates suppliers through a 7-step qualification process, identifying the best resources

Maximize Performance: Qualified suppliers are managed by a uniform set of standards in accordance with your master contract and measured against SLAs

Widen the Pool: Gain access to 2,500 qualified agencies through our global network

Vendor Neutral: A level playing field increases participation and improves quality of hires



MSP Highlights

Risk Mitigation: Avoid litigation related to worker classification and freelancer hiring compliance

Quality and Consistency: Program auditing measures performance to create benchmarks, measure results and drive process improvements

Global Reach: Localized processes, rapid deployment plans and access to our global supply channel allow you to quickly reach new markets

Tailored Options: Incorporate proprietary technology and service modules to create a total workforce solution

MANAGED SERVICES PROGRAM

The MSP delivers an end-to-end human resources solution that aligns with your organizational strategies.

By outsourcing all, or part, of the day-to-day management of your temporary/project workforce you can improve compliance, control spend and gain enterprise-wide visibility into your most valuable resource: your human capital.